

1. PreSonus FaderPort v2 (2018)

- MIDI Remote Device for Cubase 12

2. Change History

Date	Change
25.09.2022	Initial revision
14.10.2022	<ul style="list-style-type: none"> • RTC added (press RWD & FWD) • Improved knob functionality
18.12.2022	<ul style="list-style-type: none"> • Play Button can be used also to stop playing (pause) • Footswitch function added to start/stop recording
23.12.2022	<ul style="list-style-type: none"> • Rework of transport section to correct bug from 18.12.2022 • Footswitch acts like the record button
01.01.2023	<ul style="list-style-type: none"> • Remember button setting when switching from shift to normal page • Fixed: A few LED were not switched of when changing to shift mode <p>From CKB @ Steinberg Forum:</p> <ul style="list-style-type: none"> • Modification of PAN & MASTER mode for better usability (rounding of values) • Modification of Footswitch functionality • Switching of LEDs when leaving Cubase
14.01.2023	<ul style="list-style-type: none"> • In shift mode the touch (latch) button can be used to deactivate/activate the motorfader functionality (update of position when changing channel)
16.01.2023	<ul style="list-style-type: none"> • Issue with CR Master Volume and shift/normal page change solved. <p>Thanks to CKB @ Steinberg Forum for the good workaround</p>
16.04.2023	<ul style="list-style-type: none"> • Version without LED color setting added (refer to Issues with settings LED colors on some systems) • Overview from CKB @ Steinberg Forum added to zip file

Many thanks to all my supporters in the Steinberg Forum (<https://forums.steinberg.net>), the Yamaha Musicians Forum (<https://yamahamusicians.com/>) and on my own Website (<https://wem-music.de>).

Special thanks to CKB @ Steinberg Forum for the additions to the footswitch functionality, the PAN/MASTER functionality and switching off LEDs when leaving Cubase.

My sincere thanks also to my supporters on <https://www.buymeacoffee.com/wemmusicde>.

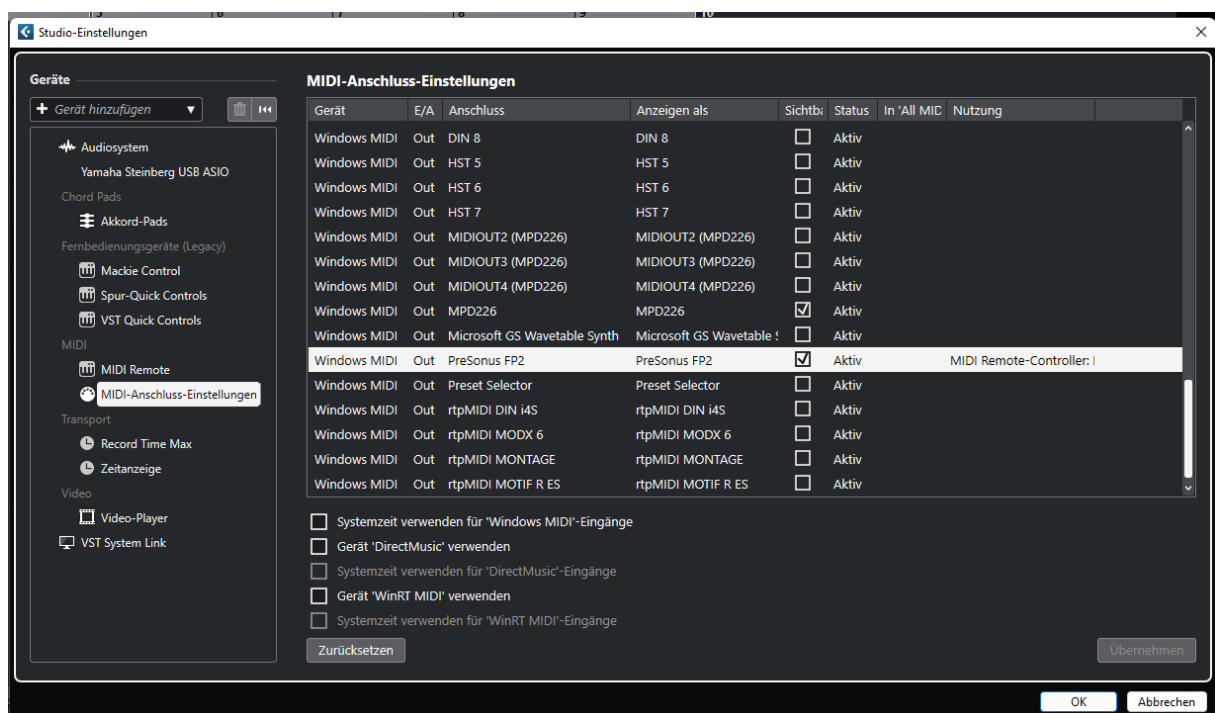
3. General

3.1. Setup

By default, the FaderPort is set to Studio One Mode. If you changed into some other mode than you need to set it back to Studio One mode. To do this, you need to press and hold the NEXT button while powering on your FaderPort, then press the Solo button.

3.2. Midi Port Names:

By default, the MIDI Port of the FaderPort v2 is named "PreSonus FP2". The MIDI Remote Device script is searching for exactly this name. If you have changed the name, you need to set it back to the default name.



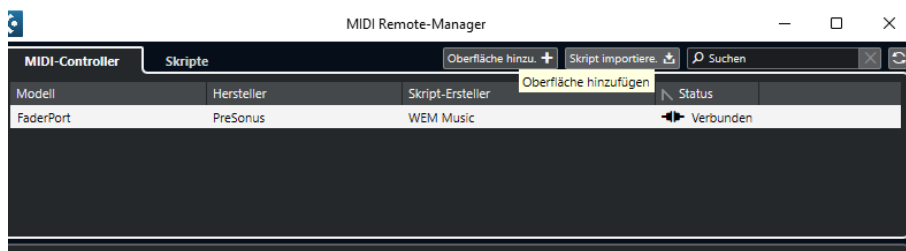
3.3. Installing the script (on Windows 10/11 systems)

If you are using the JavaScript file:

- Copy the JavaScript file (Presonus_FaderPort.js) into the folder:
"C:\Users\USERNAME\Documents\Steinberg\Cubase\MIDI Remote\Driver Scripts\Local\PreSonus\FaderPort"
- Create the PreSonus directory if not already existent.

If you are using the midi remote file:

- Load the PreSonus_FaderPort.midiremote file by using the MIDI Remote Manger and clicking the “add surface” button.



3.4. Issues with settings LED colors on some systems

On some systems the setting of LED colors leads into a hanging script. The issue was reported more often from MacOS then Windows. Unfortunately, the exact reason is unknown until today. The deactivation of the LED color setting helped to sort out or at least reduce the frequency of occurrence for some users.

If you have the described issue, you can try using the file named “PreSonus_FaderPort_Without_Colors.js”. The two versions are identical beside the LED color setting.

3.5. Cubase 12 help for MIDI Remote Devices

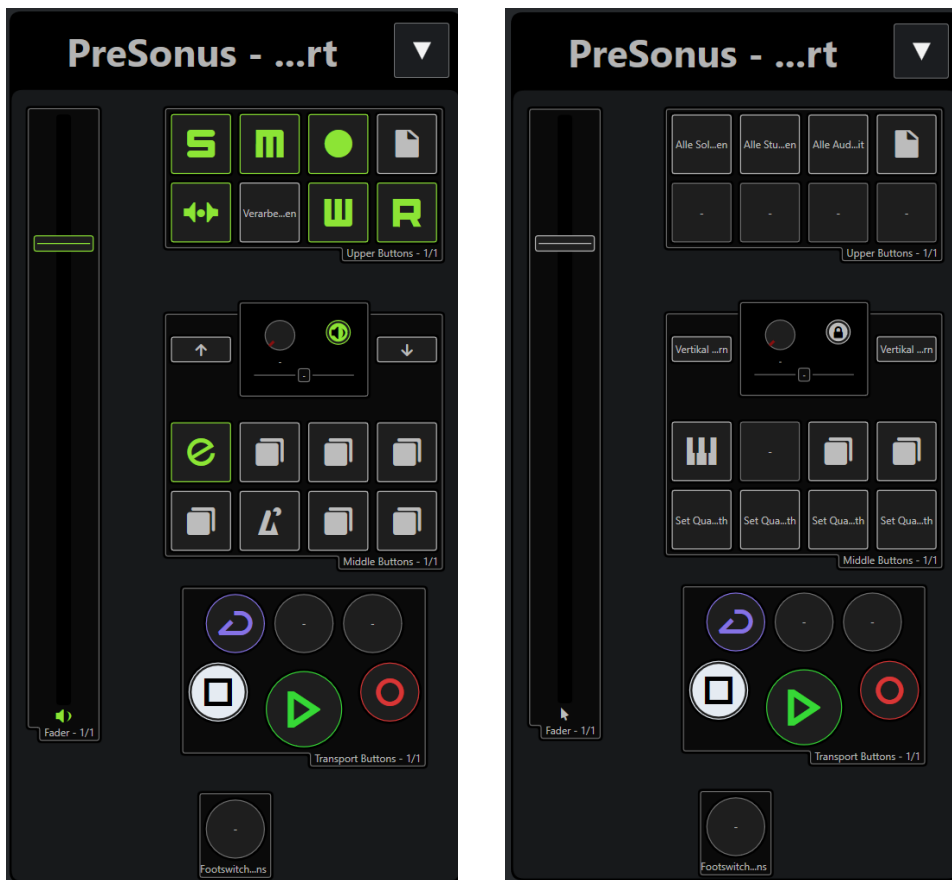
For more details about the general usage of the Midi Remote Devices please refer to the Cubase 12 manual.

You can find the help under following link:

https://steinberg.help/cubase_pro/v12/en/cubase_nuendo/topics/midi_remote/midi_remote_c.html

4. Functionally:

The script features two pages: the main page and a shift page with different mappings.



4.1. Upper Section

Control Element	Function Main Page	Function Shift Page
Fader	Volume of selected track	Value under the mouse
Solo	Toggle solo of selected track	Unsolo all tracks
Mute	Toggle mute of selected track	Unmute all tracks
Arm	Toggle arm of selected track	Arm all audio tracks
Shift	Go to shift page	Return to main page
Bypass	Toggle Bypass Cue sends	n.a. ²⁾
Touch	Clears audio performance peak	Toggle motorfader functionality on/off
Write	Toggle write automation of selected track	n.a. ²⁾
Read	Toggle write automation of selected track	n.a. ²⁾

4.2. Middle Section

4.2.1. Main Page Section

Main Page	Button	Prev Button	Next Button	Rotate Knob	Press Knob
Link	Open Channel Editor	-	-	-	-
Pan	activate Pan mode	Previous track	Next track	Pan of selected track	Toggle monitor state
Channel	activate Channel mode	Previous track	Next track	Scroll through tracks	Toggle monitor state
Scroll	activate scroll mode	Scroll left in timeline	Scroll right in timeline	Scroll through timeline	Toggle monitor state
Master	activate CR volume mode	Previous track	Next track	CR master volume	Toggle monitor state
Click	Toggle click	-	-	-	-
Section	activate nudge mode	Nudge selected event left	Nudge selected event right	Nudge event with knob	Toggle monitor state
Marker	Activates marker mode	Go to nearest marker on the left	Go to nearest marker on the right	Scroll through markers	Insert marker on current position

4.2.2.Shift Page section

Shift Page	Button	Prev Button	Next Button	Rotate Knob	Press Knob
Link	Open VST Instrument Editor	-	-	-	-
Pan	n/a ²⁾				
Channel	Activates value under mouse for knob ¹⁾			Modify value under mouse	Lock current value
Scroll	activate zoom mode	Zoom out vertically	Zoom in vertically	Zoom in/out horizontally	Lock current value
Master	Set Q to 2 th ²⁾	-	-	-	-
Click	Set Q to 4 th ²⁾	-	-	-	-
Section	Set Q to 8 th ²⁾	-	-	-	-
Marker	Set Q to 16 th ²⁾	-	-	-	-

¹⁾ In Value under Mouse mode for the knob the fader value under mouse operation is deactivated

²⁾ Can be freely changed to user assignments

4.3. Transport Section

Control Element	Function
Cycle	On/Off Cycle
FWD	Forward
RWD	Rewind
FWD&RWD together	Return to Zero
Stop	Stop / If already stopped jump to left locator
Play / Pause	Play / Pause
Record	Start record

4.4. Footswitch Section

The footswitch is set up to start and stop recording. The script detects additionally in which state you have pressed the footswitch and reacts accordingly.

While State	Triggered function
Playing	Punch-in recording
Recording	Stops recording & playback or punch-out recording
Stopped	Starts recording & playback

4.5. Comprehensive overview of the function mapping

CKB @ Steinberg Forum create a very comprehensive one side overview of all mapped function. You can find this overview named "WEM_FaderPort_Overview.pdf" included in this zip files.